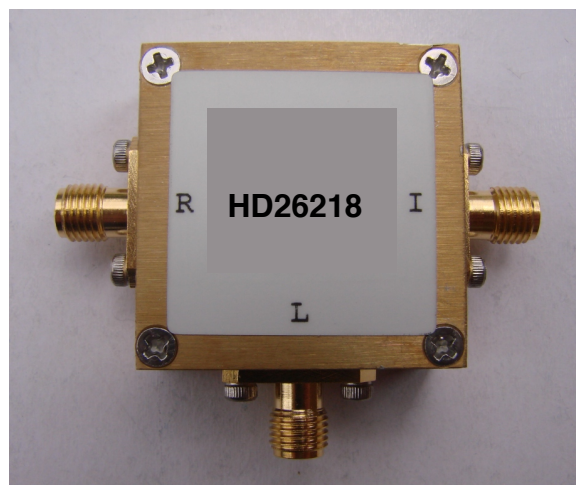


## 350-2000MHz Frequency Mixer

### Features

- LO/RF: 350-2000MHz
- IF: DC-400MHz
- LO Level: +7dBm
- Conversion Loss: 7dB
- RF Input: Up to +1dBm
- Input IP3: +13dBm
- SMA Connector

### Picture



### Description

HD26218 is a passive double balanced mixer operates with LO drive level range of +3dBm to +10dBm.

### Electrical Specifications @ +25°C, LO= +7dBm

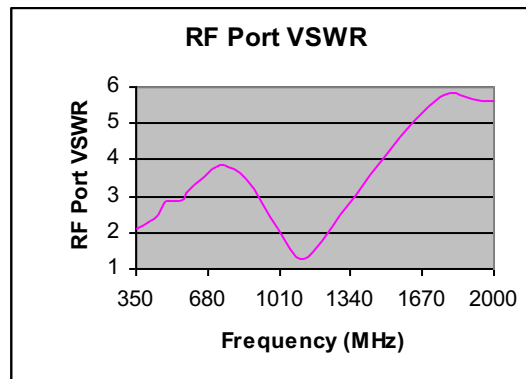
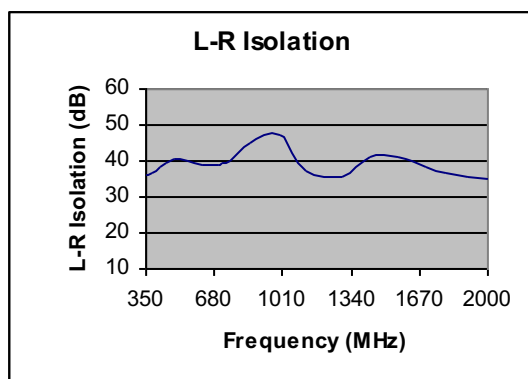
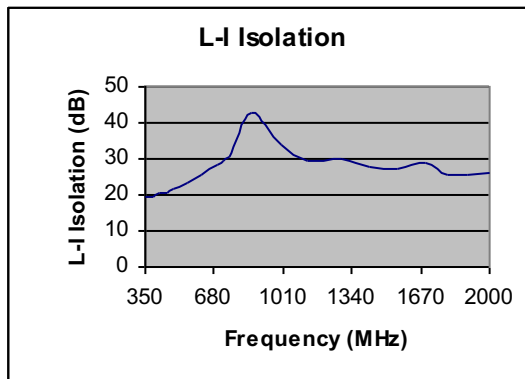
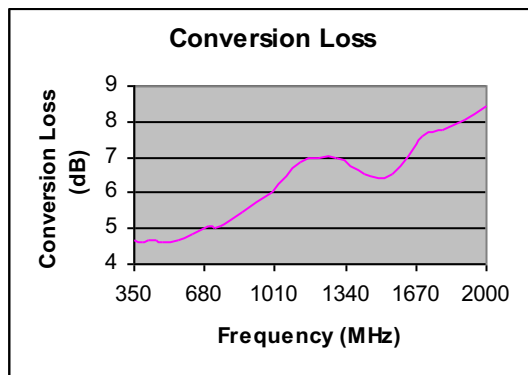
Parameter	Unit	Minimum	Typical	Maximum
Frequency Range				
LO/RF	MHz	350		2000
IF	MHz	DC		400
Conversion Loss	dB		7.0	9.2
LO-RF Isolation				
350-700 MHz	dB	26	37	
700-1000MHz	dB	20	36	
1000-2000MHz	dB	20	32	
LO-IF Isolation				
350-700MHz	dB	14	24	
700-1000MHz	dB	20	29	
1000-2000MHz	dB	20	28	
RF Input Power up to	dBm		+1	

## 350-2000MHz Frequency Mixer

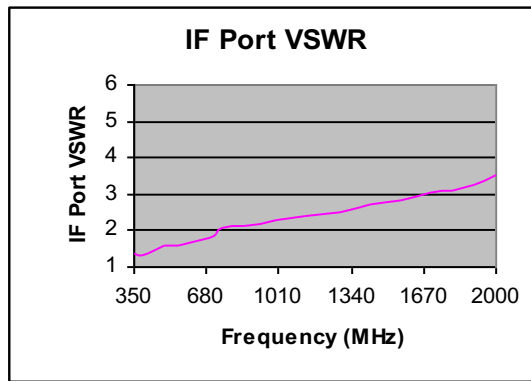
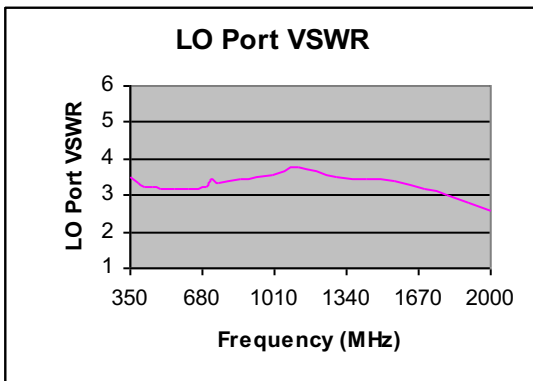
IP3 (Center Band)	dBm	+13
-------------------	-----	-----

### Typical Performance @ +25 °C

LO = +7dBm



**350-2000MHz Frequency Mixer**

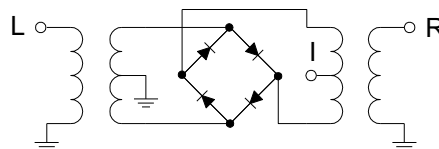


## 350-2000MHz Frequency Mixer

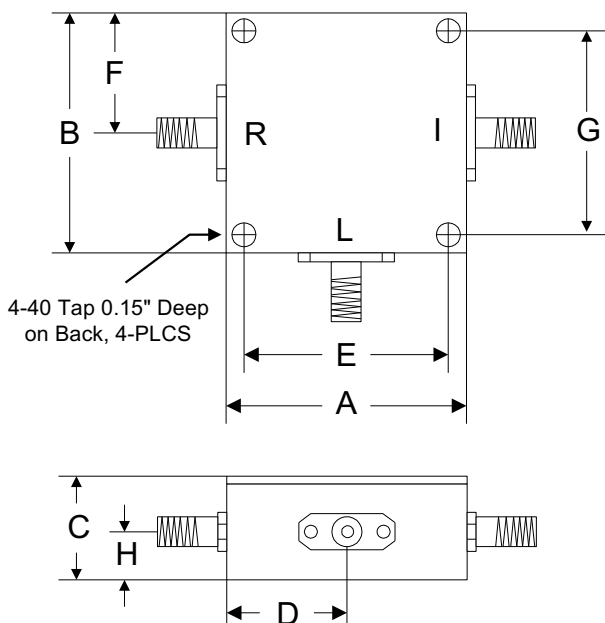
### Absolute Maximum Ratings

Parameter	Absolute Maximum
RF Power	+23dBm
Peak IF Current	40mA
Operating Temperature	-40 °C to +85 °C
Storage Temperature	-55 °C to +100 °C

### Schematic



### Outline



	A	B	C	D	E	F	G	H
Inch	1.250	1.250	0.563	0.625	1.000	0.625	1.000	0.250
mm	31.75	31.75	14.29	15.88	25.40	15.88	25.40	6.35