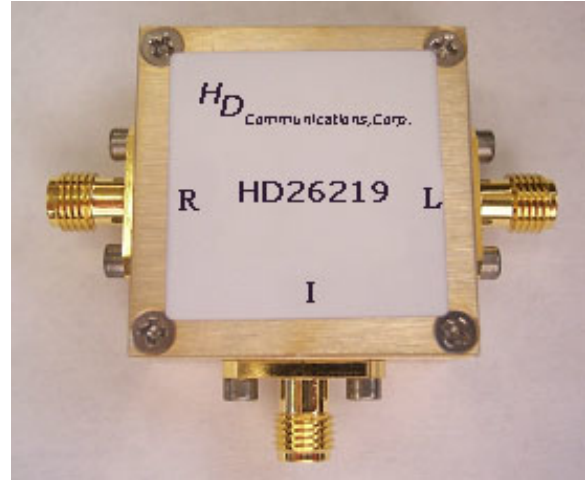


HD26219

1400-2500MHz Frequency Mixer

Features

- LO/RF: 1400-2500MHz
- IF: DC-500MHz
- LO Level: +7dBm
- Conversion Loss: 7.5dB
- RF Input: Up to +1dBm
- IP3: +11dBm
- SMA Connector



Description

HD26219 is a passive double balanced mixer operates with LO drive level range of +3dBm to +7dBm.

Electrical Specifications @ +25°C, LO= +7dBm

Parameter	Unit	Minimum	Typical	Maximum
Frequency Range				
LO/RF	MHz	1400		2500
IF	MHz	DC		500
Conversion Loss	dB		7.5	9.0
LO-RF Isolation				
1400-1700 MHz	dB	30	35	
1700-2000 MHz	dB	26	30	
2000-2500 MHz	dB	25	28	
LO-IF Isolation				
1400-1700 MHz	dB	23	26	
1700-2000 MHz	dB	23	25	
2000-2500 MHz	dB	27	30	
RF Input Power up to	dBm		+1	
IP3 (Center Band)	dBm		+11	

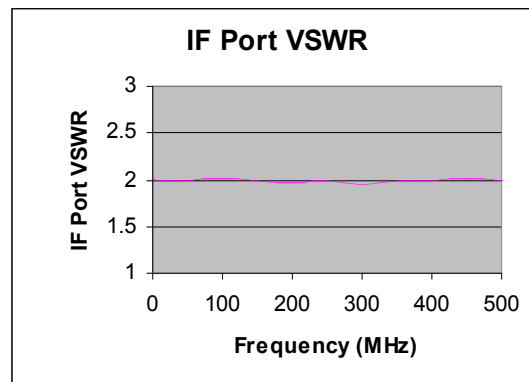
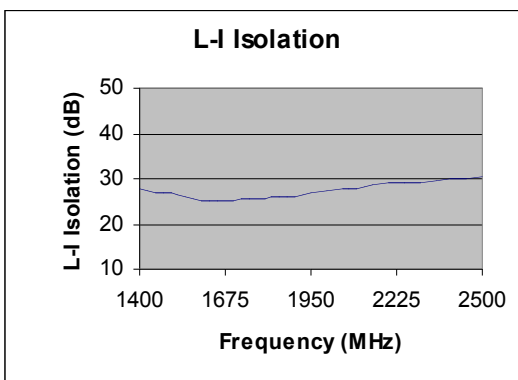
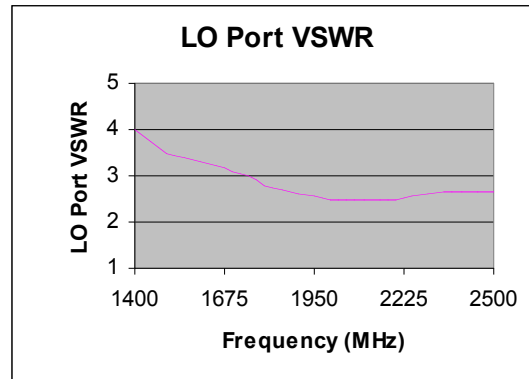
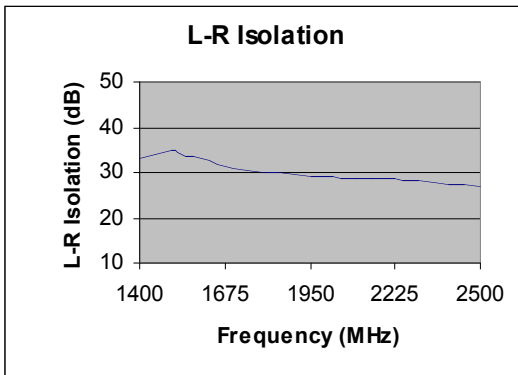
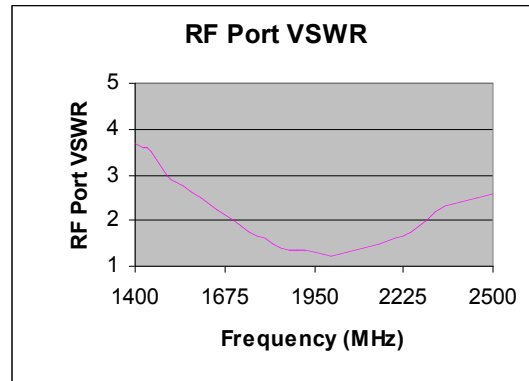
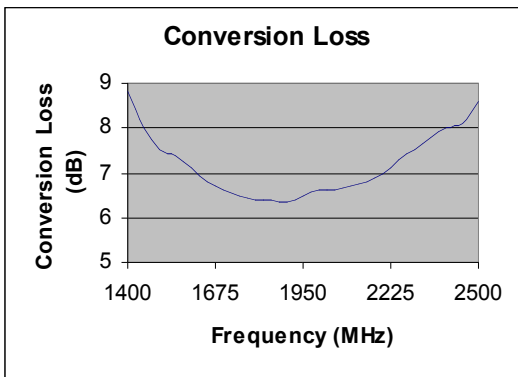
HD26219

1400-2500MHz Frequency Mixer

Conversion Loss Measured at IF = 60MHz

Typical Performance @ +25 °C

LO = +7dBm



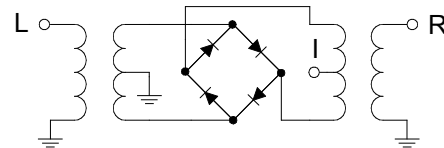
HD26219

1400-2500MHz Frequency Mixer

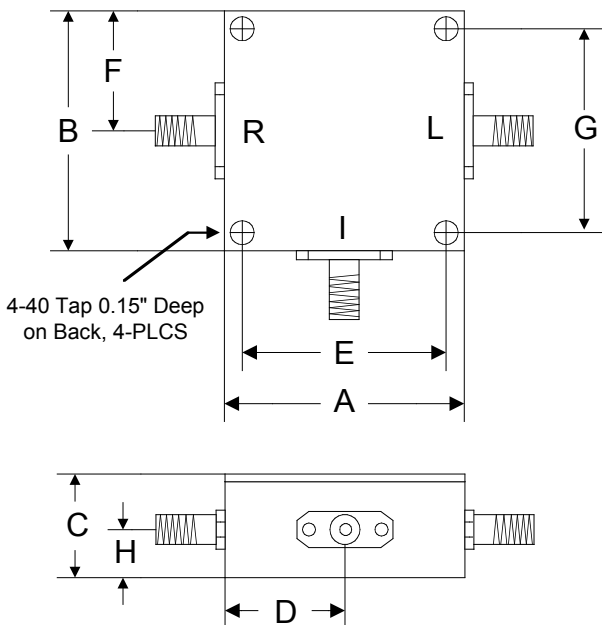
Absolute Maximum Ratings

Parameter	Absolute Maximum
RF Power	+17dBm
Peak IF Current	40mA
Operating Temperature	-40 °C to +85 °C
Storage Temperature	-55 °C to +100 °C

Schematic



Outline



	A	B	C	D	E	F	G	H
Inch	1.250	1.250	0.563	0.625	1.000	0.625	1.000	0.250
mm	31.75	31.75	14.29	15.88	25.40	15.88	25.40	6.35