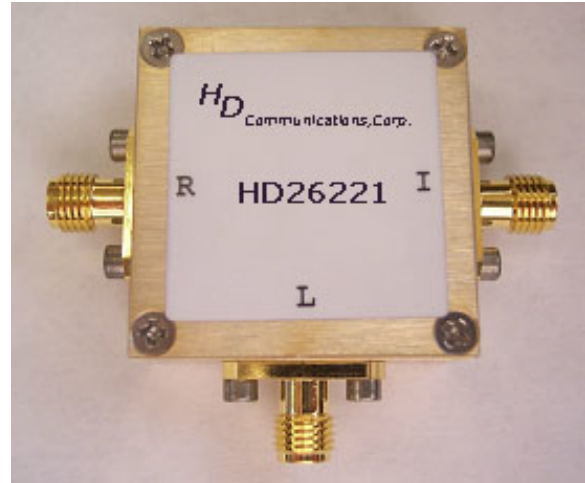


## HD26221

## 2-500MHz Frequency Mixer

### Features

- LO/RF: 2-500MHz
- IF: DC-500MHz
- LO Level: +10dBm
- Conversion Loss: 6dB
- RF Input: Up to +5dBm
- IP3: +16dBm
- SMA Connector



### Description

HD26221 is a passive double balanced mixer operates with LO drive level range of +7dBm to +13dBm.

### Electrical Specifications @ +25°C, LO= +10dBm

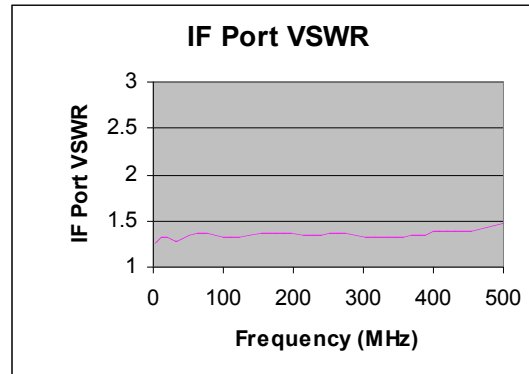
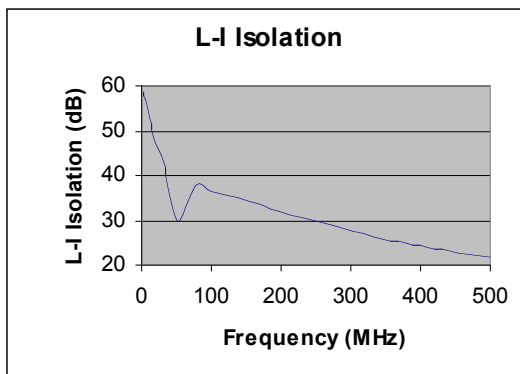
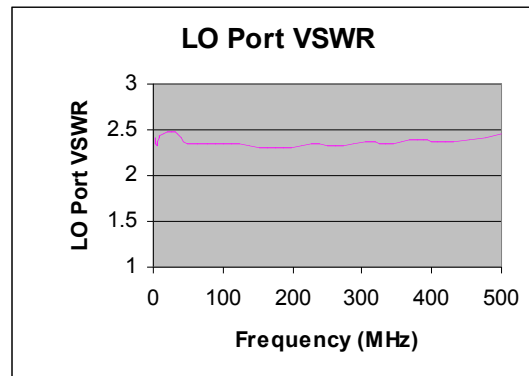
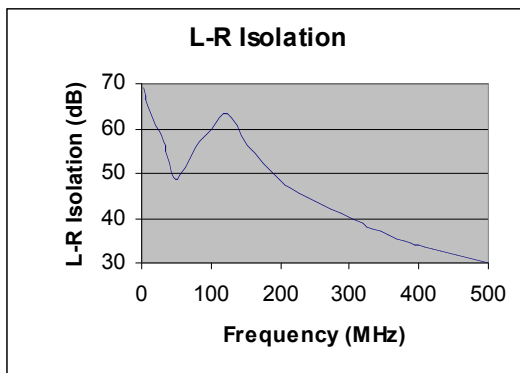
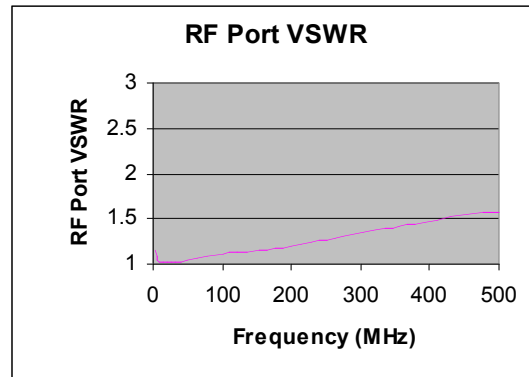
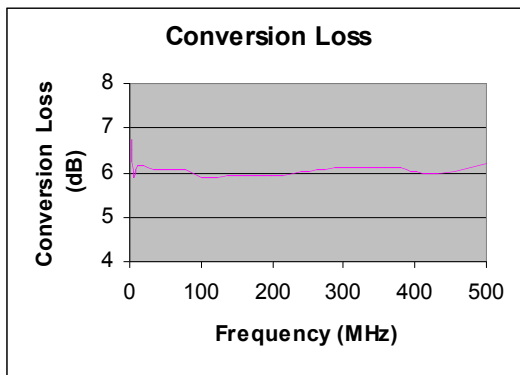
Parameter	Unit	Minimum	Typical	Maximum
Frequency Range				
LO/RF	MHz	2		500
IF	MHz	DC		500
Conversion Loss	dB		6.0	8.0
LO-RF Isolation				
2-20 MHz	dB	50	55	
20-250MHz	dB	30	45	
250-500MHz	dB	25	40	
LO-IF Isolation				
2-20MHz	dB	45	55	
20-250MHz	dB	25	45	
250-500MHz	dB	20	30	
RF Input Power up to	dBm		+5	
IP3 (Center Band)	dBm		+16	

## HD26221

## 2-500MHz Frequency Mixer

### Typical Performance @ +25 °C

LO = +10dBm



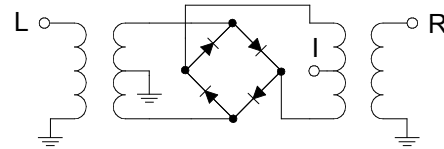
## HD26221

## 2-500MHz Frequency Mixer

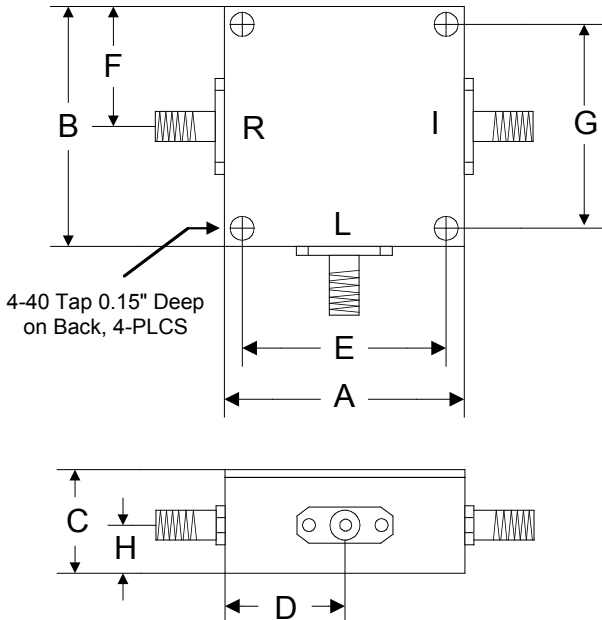
### Absolute Maximum Ratings

Parameter	Absolute Maximum
RF Power	+17dBm
Peak IF Current	40mA
Operating Temperature	-40 °C to +85 °C
Storage Temperature	-55 °C to +100 °C

### Schematic



### Outline



	A	B	C	D	E	F	G	H
Inch	1.250	1.250	0.563	0.625	1.000	0.625	1.000	0.250
mm	31.75	31.75	14.29	15.88	25.40	15.88	25.40	6.35