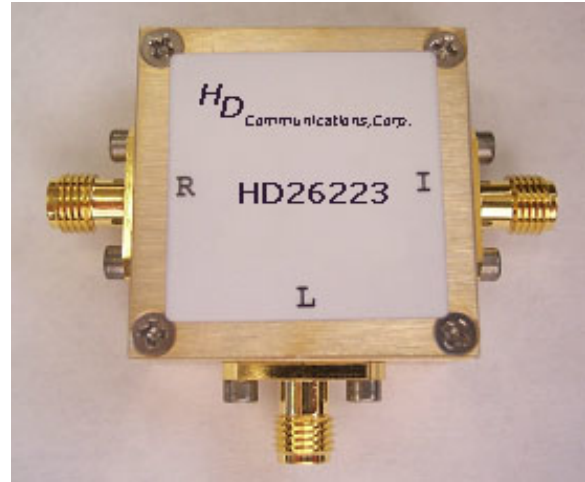


HD26223

10-1200MHz Frequency Mixer

Features

- LO/RF: 10-1200MHz
- IF: DC-1200MHz
- LO Level: +13dBm
- Conversion Loss: 8.0dB
- RF Input: Up to +9dBm
- IP3: +22dBm
- SMA Connector



Description

HD26223 is a passive double balanced mixer operates with LO drive level range of +10dBm to +16dBm.

Electrical Specifications @ +25 °C, LO= +13dBm

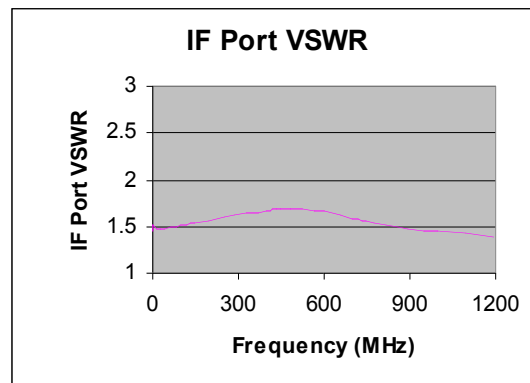
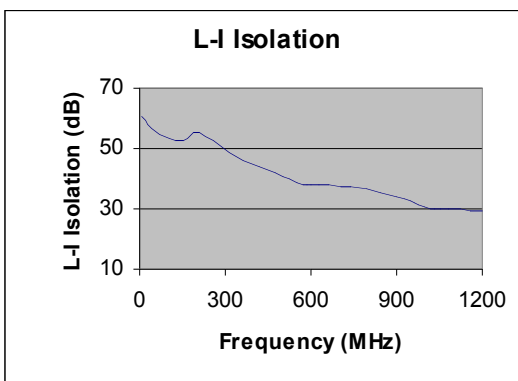
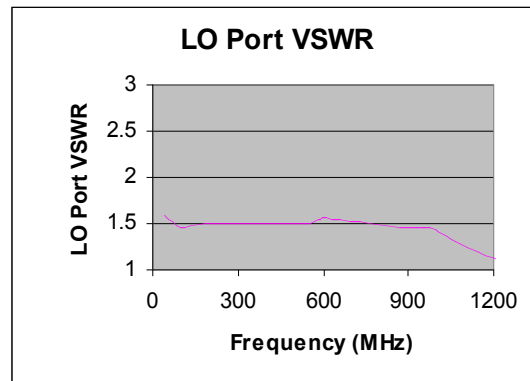
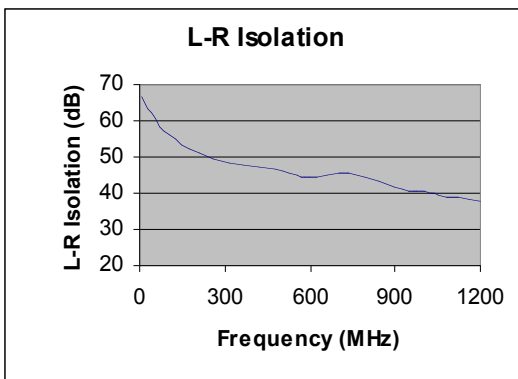
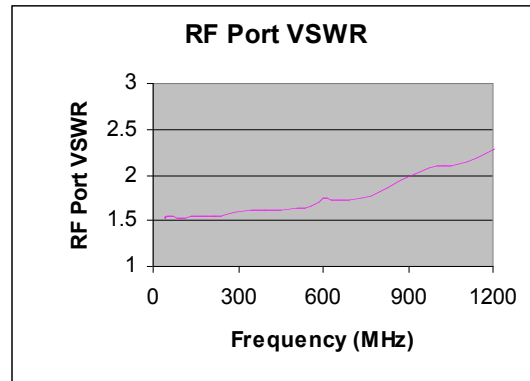
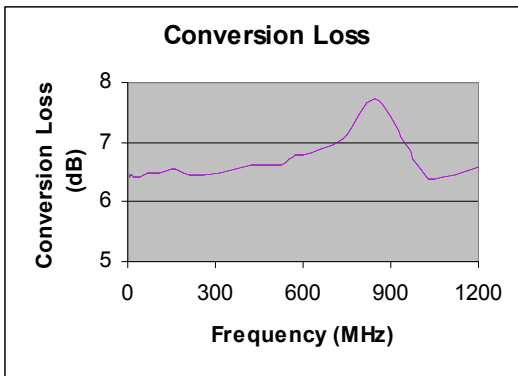
Parameter	Unit	Minimum	Typical	Maximum
Frequency Range				
LO/RF	MHz	10		1200
IF	MHz	DC		1200
Conversion Loss	dB		8.0	8.5
LO-RF Isolation				
10-100 MHz	dB	45	62	
100-600MHz	dB	32	45	
600-1200MHz	dB	26	40	
LO-IF Isolation				
10-100MHz	dB	40	68	
100-600MHz	dB	27	42	
600-1200MHz	dB	20	30	
RF Input Power up to	dBm		+9	
IP3 (Center Band)	dBm		+22	

HD26223

10-1200MHz Frequency Mixer

Typical Performance @ +25 °C

LO = +13dBm



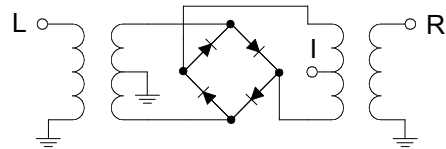
HD26223

10-1200MHz Frequency Mixer

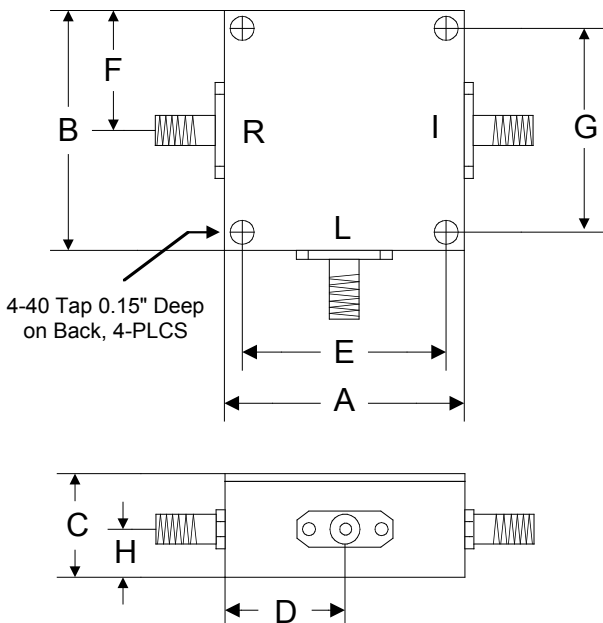
Absolute Maximum Ratings

Parameter	Absolute Maximum
RF Power	+23dBm
Peak IF Current	40mA
Operating Temperature	-40 °C to +85 °C
Storage Temperature	-55 °C to +100 °C

Schematic



Outline



	A	B	C	D	E	F	G	H
Inch	1.250	1.250	0.563	0.625	1.000	0.625	1.000	0.250
mm	31.75	31.75	14.29	15.88	25.40	15.88	25.40	6.35