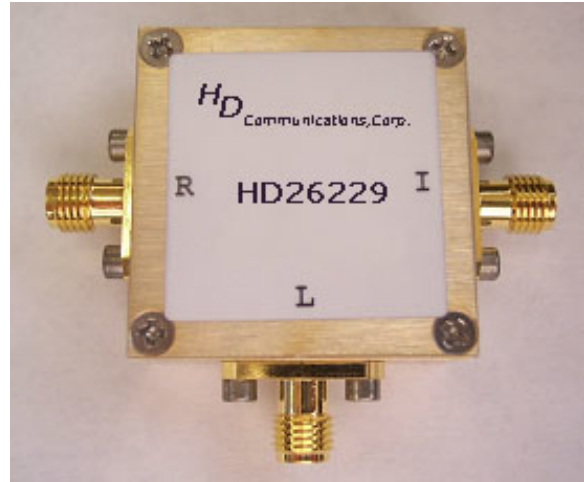


HD26229

2500-6000MHz Frequency Mixer

Features

- LO/RF: 2500-6000MHz
- IF: DC-1500MHz
- LO Level: +13dBm
- Conversion Loss: 9.5dB
- RF Input: Up to +9dBm
- IP3: +19dBm
- SMA Connector



Description

HD26229 is a passive double balanced mixer operates with LO drive level range of +10dBm to +16dBm.

Electrical Specifications @ +25 °C, LO= +13dBm

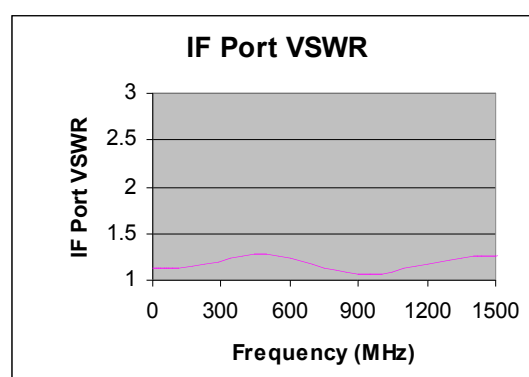
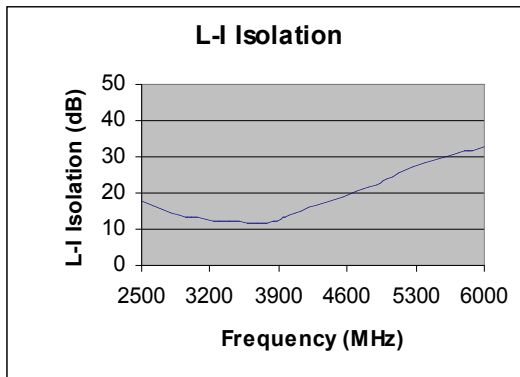
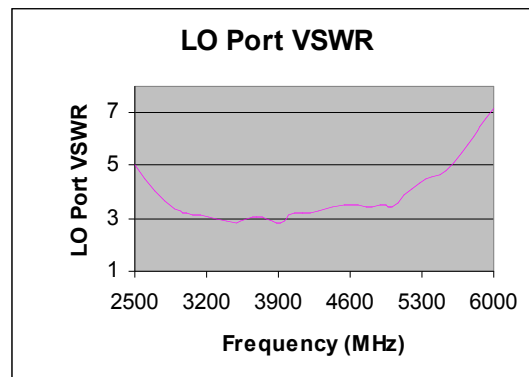
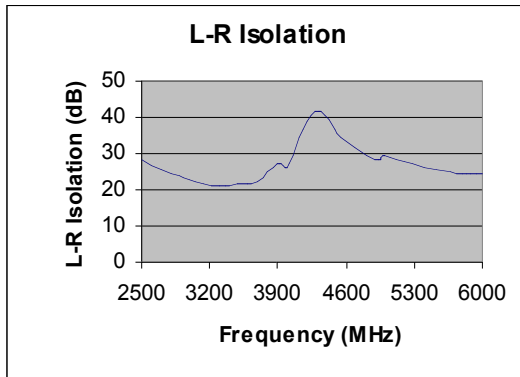
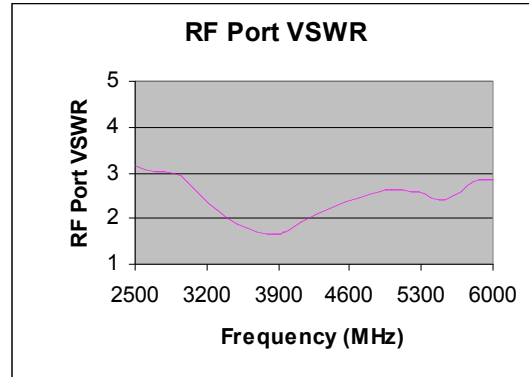
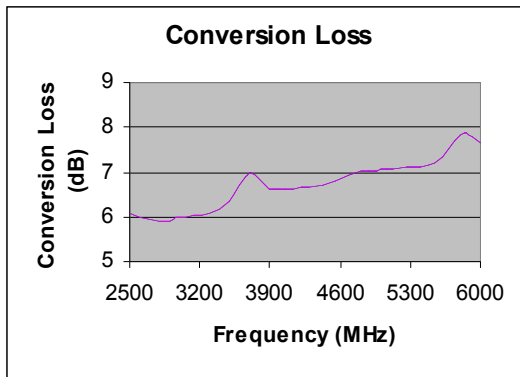
Parameter	Unit	Minimum	Typical	Maximum
Frequency Range				
LO/RF	MHz	2500		6000
IF	MHz	DC		1500
Conversion Loss	dB		8.5	9.5
LO-RF Isolation				
2500-6000 MHz	dB	17	28	
LO-IF Isolation				
2500-6000MHz	dB	8	14	
RF Input Power up to	dBm		+9	
IP3 (Center Band)	dBm		+19	

HD26229

2500-6000MHz Frequency Mixer

Typical Performance @ +25 °C

LO = +13dBm



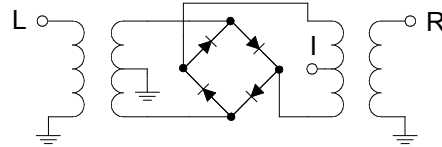
HD26229

2500-6000MHz Frequency Mixer

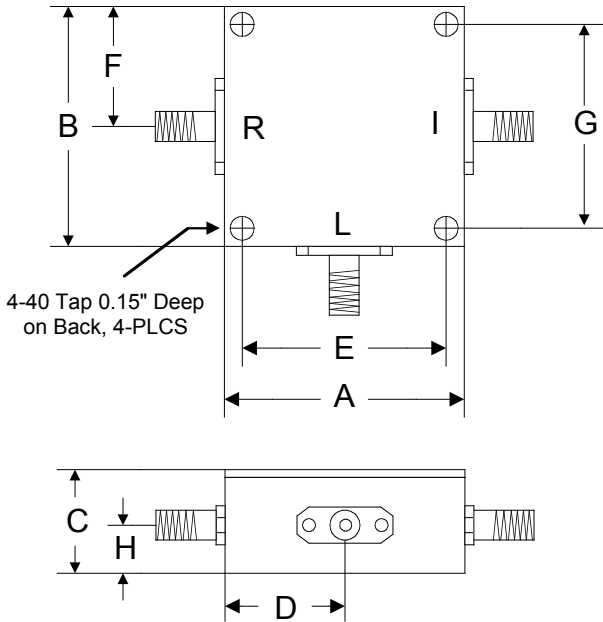
Absolute Maximum Ratings

Parameter	Absolute Maximum
RF Power	+23dBm
Peak IF Current	40mA
Operating Temperature	-40 °C to +85 °C
Storage Temperature	-55 °C to +100 °C

Schematic



Outline



	A	B	C	D	E	F	G	H
Inch	1.250	1.250	0.563	0.625	1.000	0.625	1.000	0.250
mm	31.75	31.75	14.29	15.88	25.40	15.88	25.40	6.35