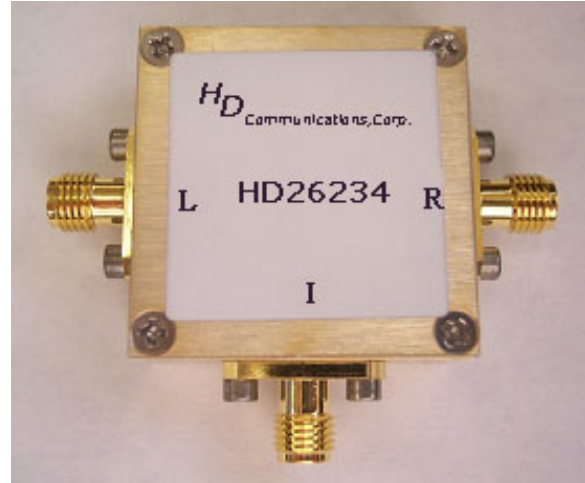


## HD26234

## 10-2500MHz Frequency Mixer

### Features

- LO/RF: 10-2500MHz
- IF: 10-2500MHz
- LO Level: +17dBm
- Conversion Loss: 7.2dB
- RF Input: Up to +15dBm
- Input IP3: +27.5dBm
- SMA Connector



### Description

HD26234 is a passive wide band double balanced mixer operates with LO drive level range of +14dBm to +20dBm.

### Electrical Specifications @ +25°C, LO= +17dBm

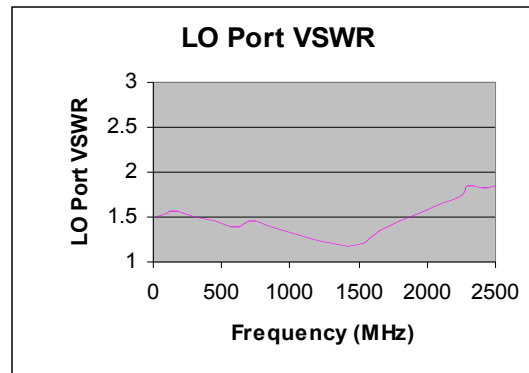
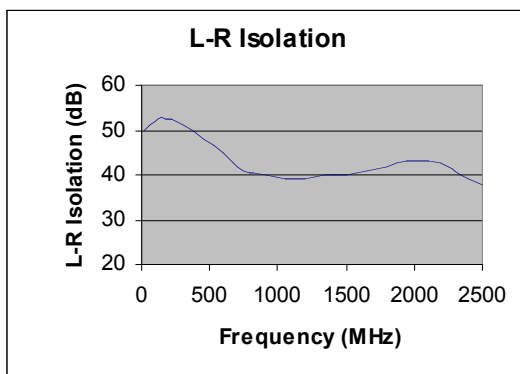
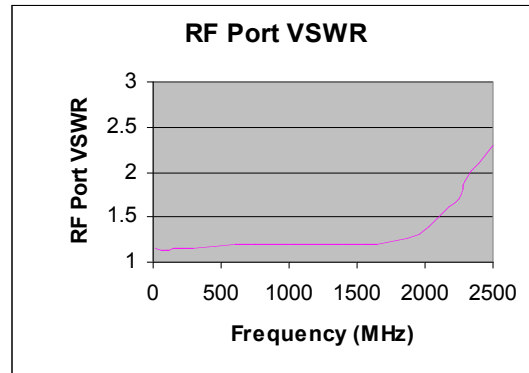
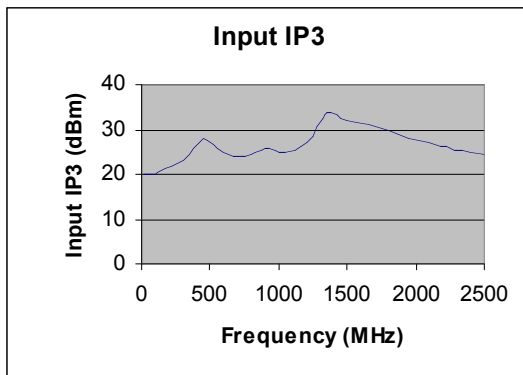
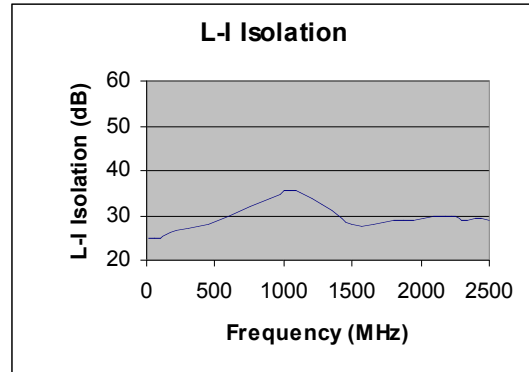
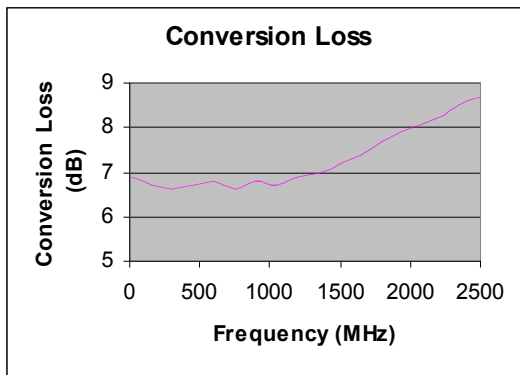
Parameter	Unit	Minimum	Typical	Maximum
Frequency Range				
LO/RF	MHz	10		2500
IF	MHz	10		2500
Conversion Loss	dB		7.2	9.0
LO-RF Isolation				
100-2200 MHz	dB	35	42	
LO-IF Isolation				
10-2400MHz	dB	29	34	
RF-IF Isolation				
10-2200MHz	dB		29.5	
RF Input Power up to	dBm		+15	
IIP3 (Center Band)	dBm		+27.5	
VSWR				
RF Port			1.2:1	
LO Port			1.3:1	
IF Port			1.2:1	

**HD26234**

**10-2500MHz Frequency Mixer**

**Typical Performance @ +25 °C**

LO = +17dBm



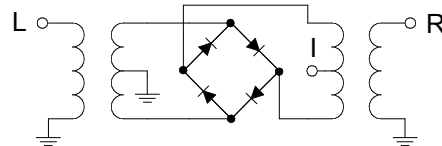
## HD26234

## 10-2500MHz Frequency Mixer

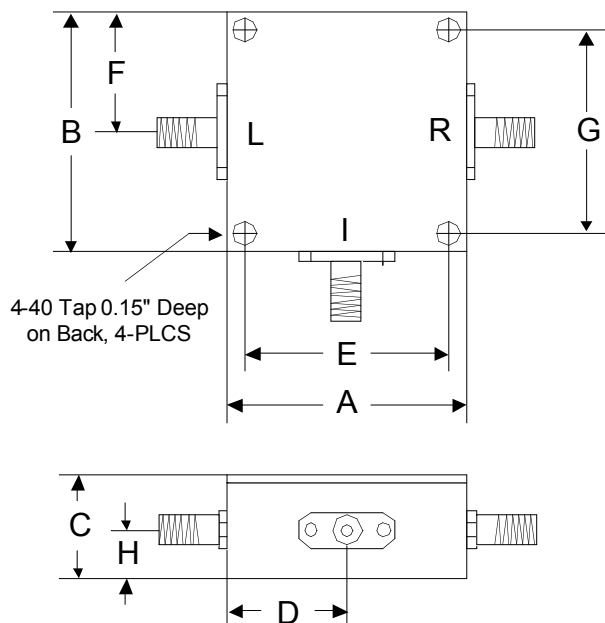
### Absolute Maximum Ratings

Parameter	Absolute Maximum
RF Input Power	+20dBm
Operating Temperature	-40 °C to +85 °C
Storage Temperature	-60 °C to +100 °C

### Schematic



### Outline



	A	B	C	D	E	F	G	H
Inch	1.250	1.250	0.563	0.625	1.000	0.625	1.000	0.250
mm	31.75	31.75	14.29	15.88	25.40	15.88	25.40	6.35