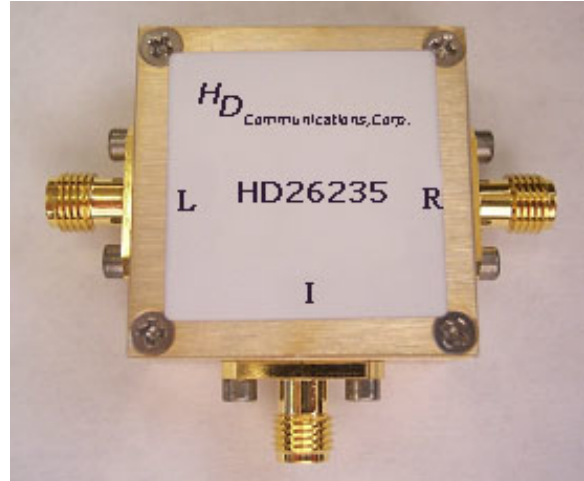


## HD26235

## 1-2700MHz Frequency Mixer

### Features

- LO/RF: 1-2700MHz
- IF: 1-2000MHz
- LO Level: +17dBm
- Conversion Loss: 7dB
- RF Input: Up to +13dBm
- Input IP3: +27.8dBm
- SMA Connector



### Description

HD26235 is a passive wide band double balanced mixer operates with LO drive level range of +14dBm to +20dBm.

### Electrical Specifications @ +25°C, LO= +17dBm

Parameter	Unit	Minimum	Typical	Maximum
Frequency Range				
LO/RF	MHz	1		2700
IF	MHz	1		2000
Conversion Loss	dB		7.0	9.5
LO-RF Isolation				
10-1500 MHz	dB	21	38	
10-2200MHz	dB	17	36	
LO-IF Isolation				
10-2000MHz	dB	20	31	
10-2200MHz	dB	16	33	
RF-IF Isolation				
10-2200MHz	dB		25	
RF Input Power up to	dBm		+13	



**HD26235**

**1-2700MHz Frequency Mixer**

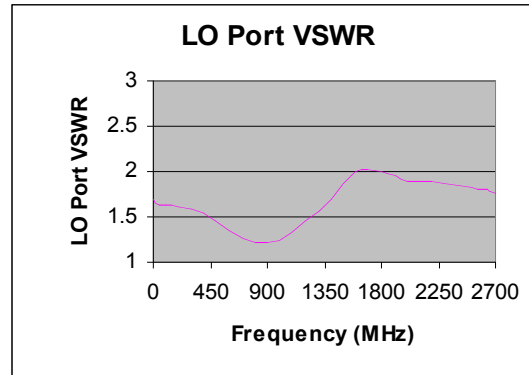
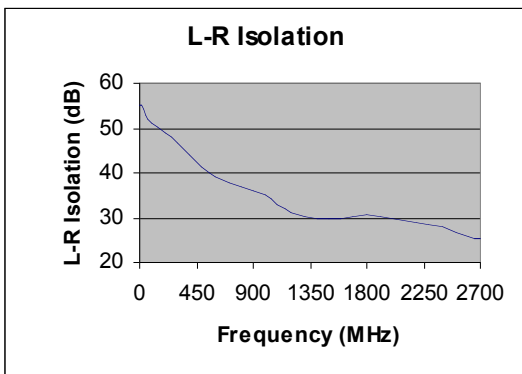
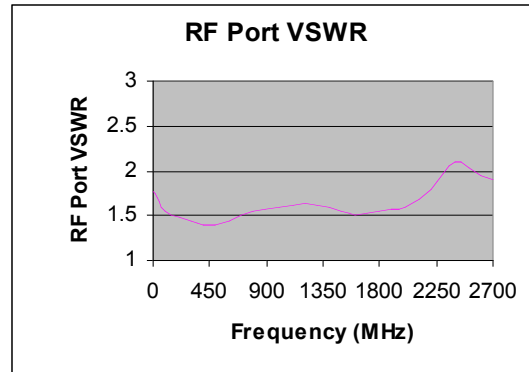
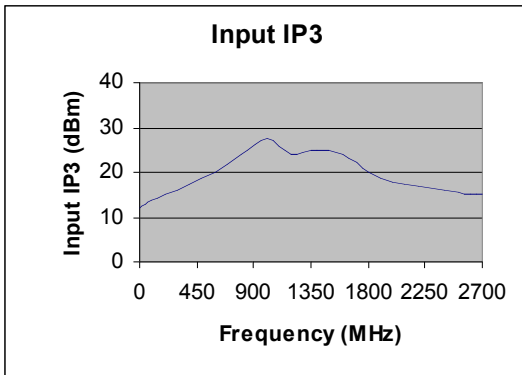
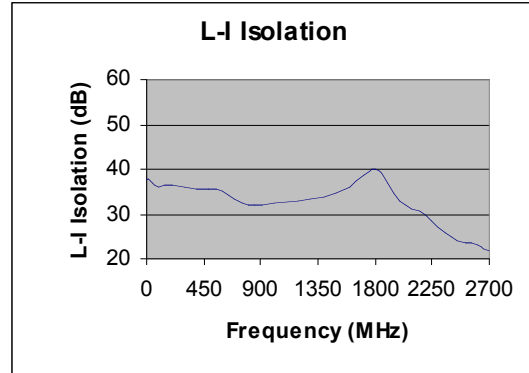
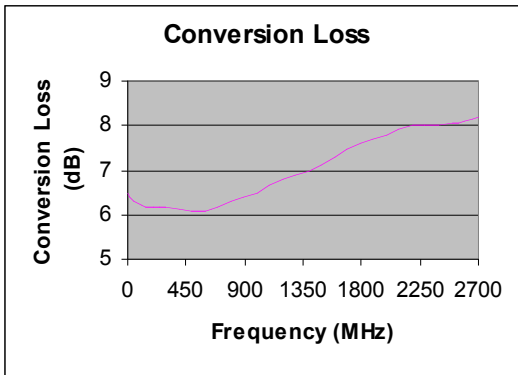
IIP3 (Center Band)		dBm		+27.8	
VSWR	RF Port			1.6:1	
	LO Port			1.9:1	
	IF Port			1.8:1	

**HD26235**

**1-2700MHz Frequency Mixer**

**Typical Performance @ +25 °C**

LO = +17dBm



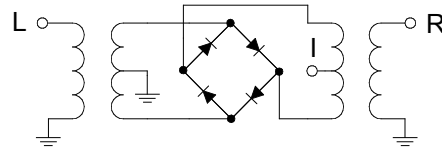
## HD26235

## 1-2700MHz Frequency Mixer

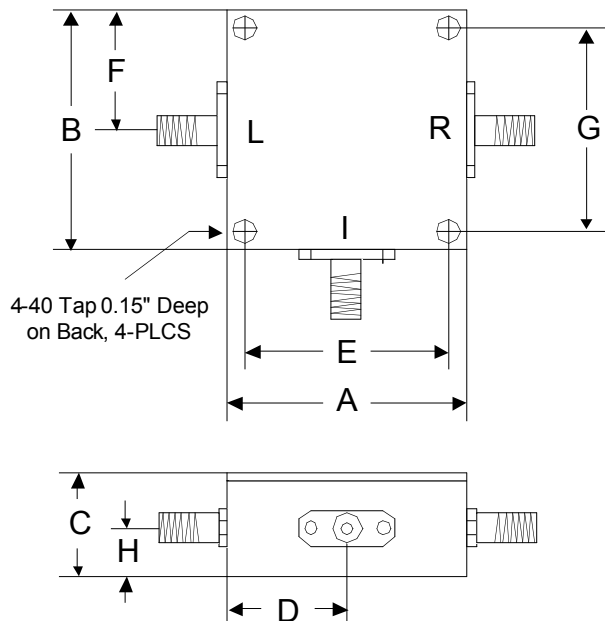
### Absolute Maximum Ratings

Parameter	Absolute Maximum
RF Input Power	+23dBm
Operating Temperature	-40 °C to +85 °C
Storage Temperature	-60 °C to +100 °C

### Schematic



### Outline



	A	B	C	D	E	F	G	H
Inch	1.250	1.250	0.563	0.625	1.000	0.625	1.000	0.250
mm	31.75	31.75	14.29	15.88	25.40	15.88	25.40	6.35