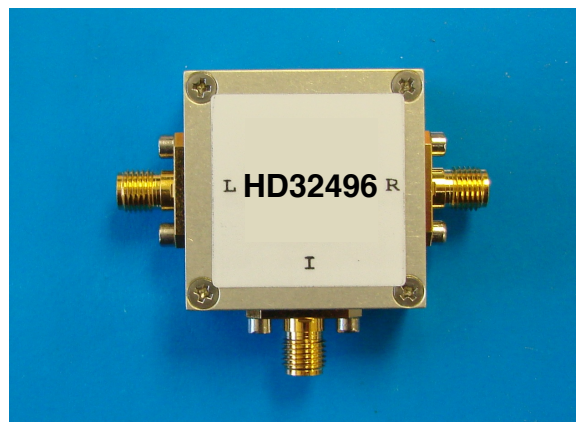


220-300MHz Frequency Mixer

Features

- LO/RF: 220-300MHz
- IF: DC-80MHz
- LO Level: +17dBm
- Conversion Loss: 7.5dB
- RF Input: Up to +14dBm
- Input IP3: +26dBm
- SMA Connector

Picture



Description

HD32496 is a high IP3 passive double balanced mixer operates with LO drive level range of +14dBm to +20dBm.

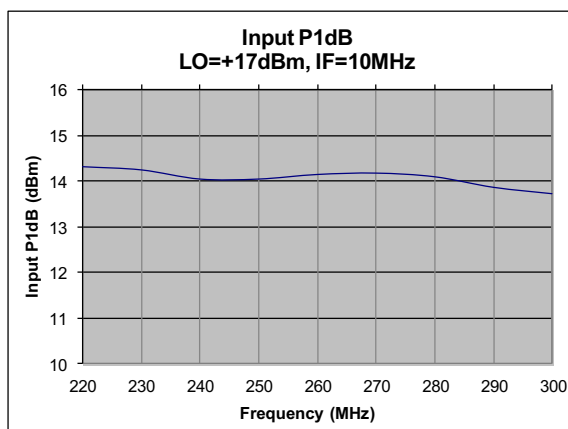
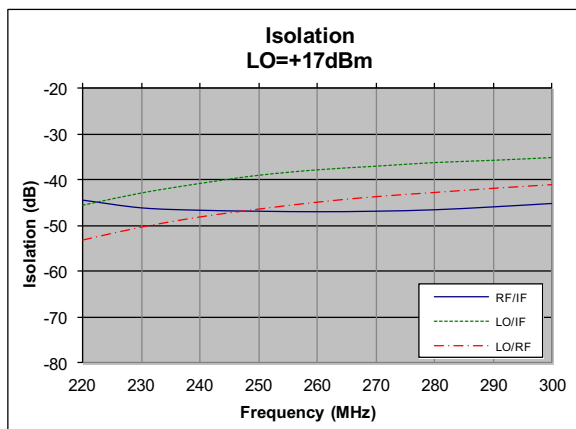
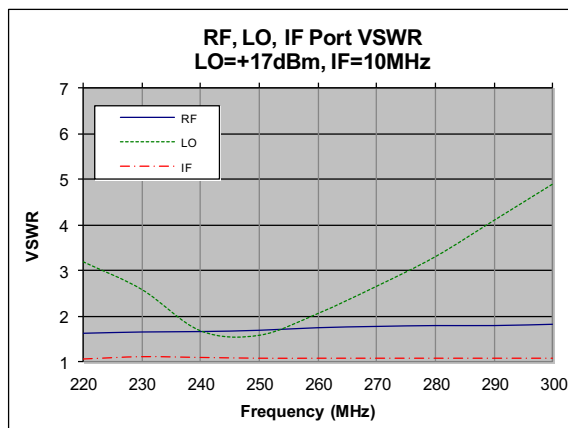
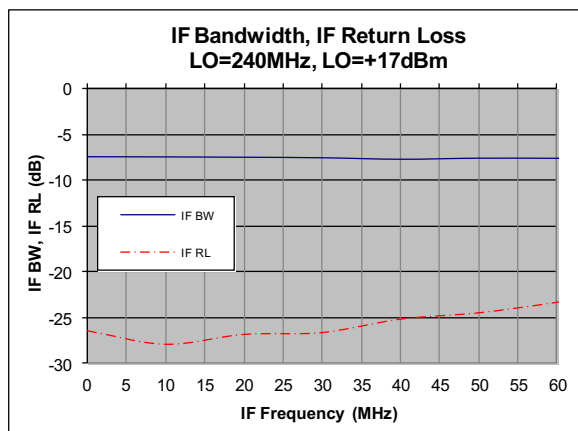
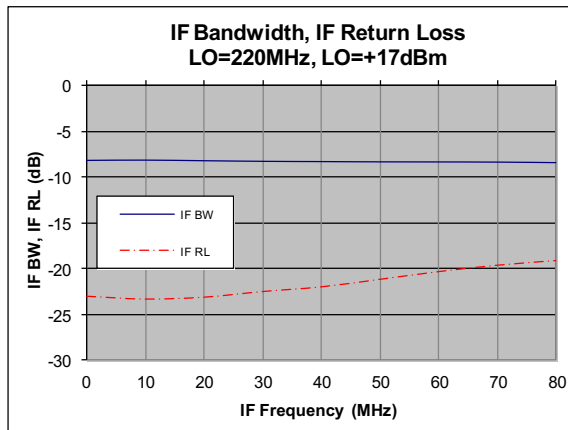
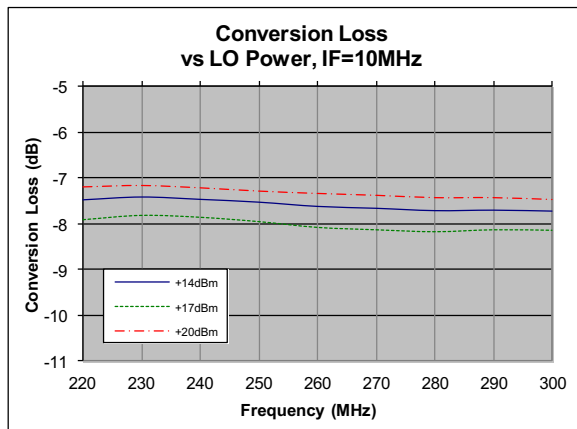
Electrical Specifications @ +25 °C, LO= +17dBm, 50 Ω

Parameter	Unit	Minimum	Typical	Maximum
Frequency Range				
LO/RF	MHz	220		300
IF	MHz	DC		80
Conversion Loss	dB		7.5	8.5
LO-RF Isolation	dB	38	45	
LO-IF Isolation	dB	30	38	
RF-IF Isolation	dB	40	47	
RF Input Power P _{1dB}	dBm		+13	
IP3 (Center Band)	dBm		+26	

Unless otherwise noted, all measurements performed as a downconverter.

220-300MHz Frequency Mixer

Typical Performance @ +25 °C

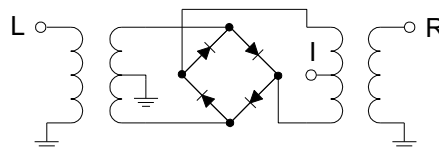


220-300MHz Frequency Mixer

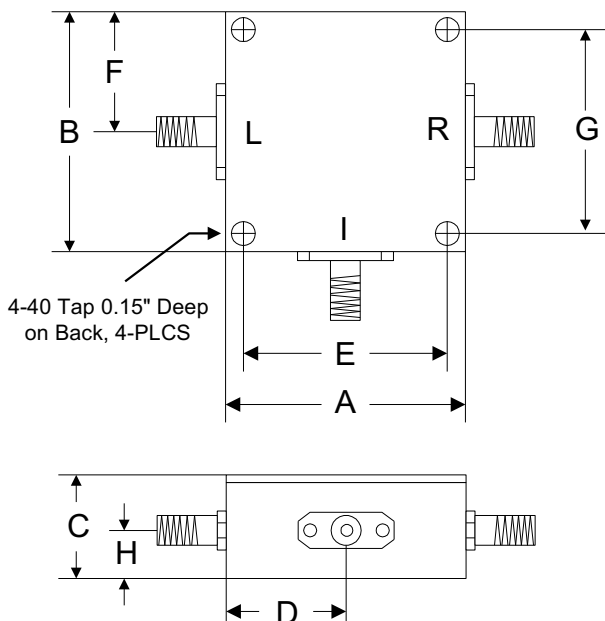
Absolute Maximum Ratings

Parameter	Absolute Maximum
RF/IF Power	+23dBm
LO Power	+23dBm
Peak IF Current	40mA
Operating Temperature	-40 °C to +85 °C
Storage Temperature	-55 °C to +100 °C

Schematic



Outline



	A	B	C	D	E	F	G	H
Inch	1.250	1.250	0.563	0.625	1.000	0.625	1.000	0.250
mm	31.75	31.75	14.29	15.88	25.40	15.88	25.40	6.35