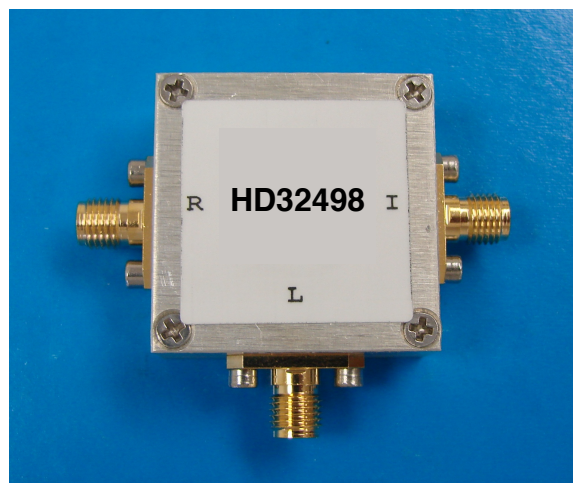


## 20-1000MHz Frequency Mixer

### Features

- LO/RF: 20-1000MHz
- IF: DC-1000MHz
- LO Level: +7dBm
- Conversion Loss: 7dB
- RF Input: Up to +1dBm
- IP3: +17dBm
- SMA Connector

### Picture



### Description

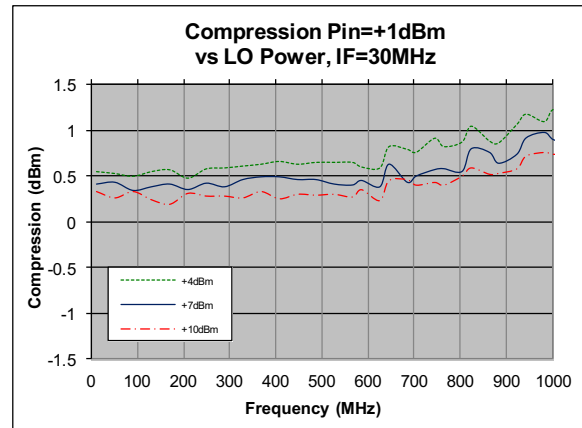
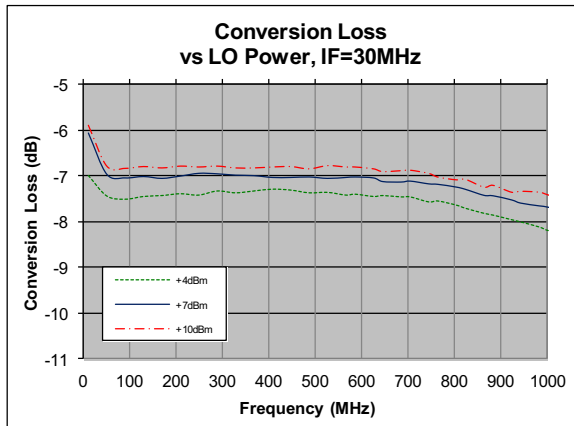
HD32498 is a passive double balanced mixer operates with LO drive level range of +4dBm to +10dBm.

### Electrical Specifications @ +25 °C, LO= +7dBm, IF=30MHz, 50 Ω

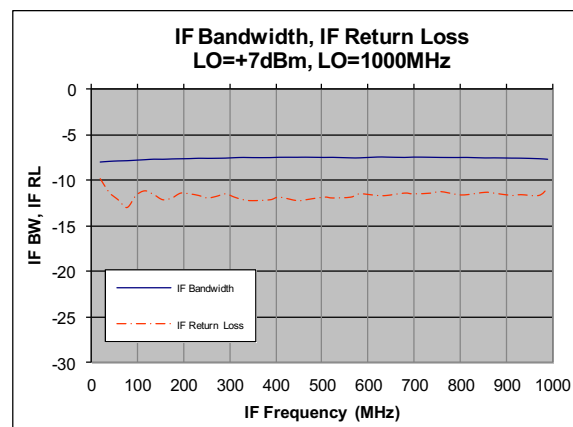
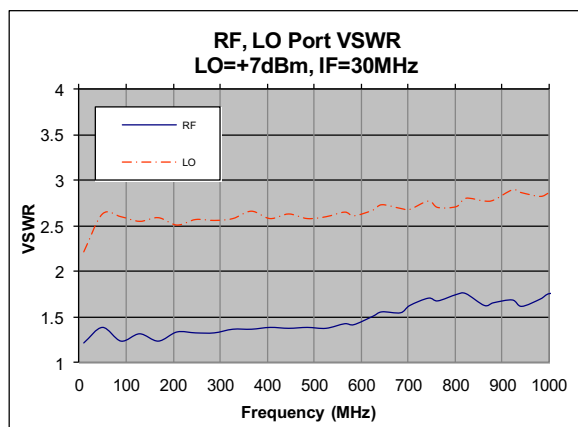
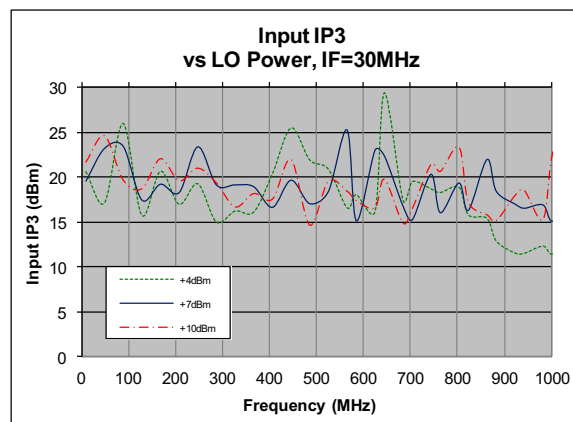
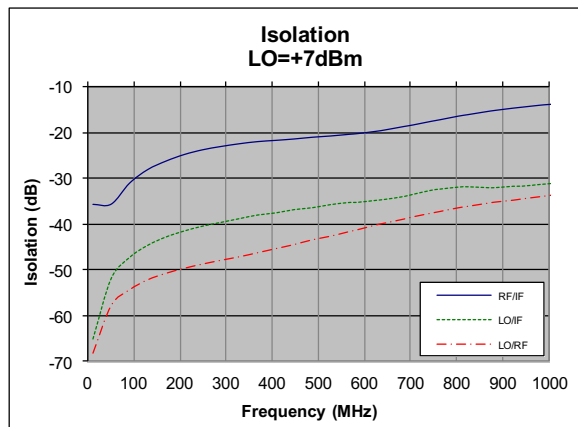
Parameter	Unit	Minimum	Typical	Maximum
Frequency Range				
LO/RF	MHz	20		1000
IF	MHz	DC		1000
Conversion Loss	dB		7.0	9.5
LO-RF Isolation				
20-200MHz	dB	40	63	
200-500MHz	dB	28	50	
500-1000MHz	dB	20	35	
LO-IF Isolation				
20-200MHz	dB	30	56	
200-500MHz	dB	22	47	
500-1000MHz	dB	20	37	
RF Input Power up to	dBm		+1	
Input IP3 (Center Band)	dBm		+17	

## 20-1000MHz Frequency Mixer

### Typical Performance @ +25 °C



## 20-1000MHz Frequency Mixer

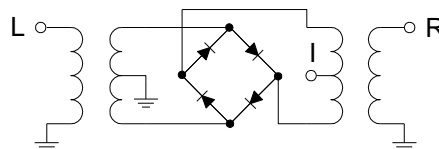


## 20-1000MHz Frequency Mixer

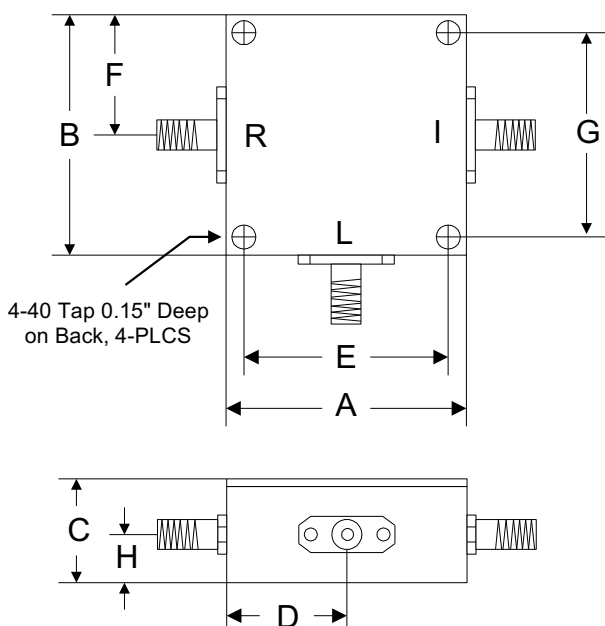
### Absolute Maximum Ratings

Parameter	Absolute Maximum
RF Power	+17dBm
Peak IF Current	40mA
Operating Temperature	-40 °C to +85 °C
Storage Temperature	-55 °C to +100 °C

### Schematic



### Outline



	A	B	C	D	E	F	G	H
<b>Inch</b>	1.250	1.250	0.563	0.625	1.000	0.625	1.000	0.250
<b>mm</b>	31.75	31.75	14.29	15.88	25.40	15.88	25.40	6.35