

20-1000MHz Frequency Mixer

Features

- LO/RF: 20-1000MHz
- IF: DC-1000MHz
- LO Level: +10dBm
- Conversion Loss: 6.5dB
- RF Input: Up to +5dBm
- IP3: +20dBm
- SMA Connector

Picture



Description

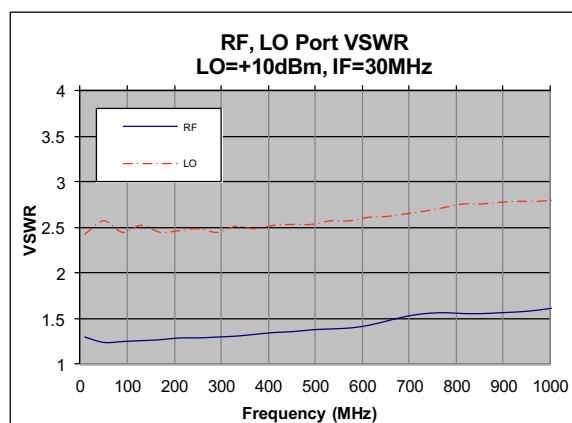
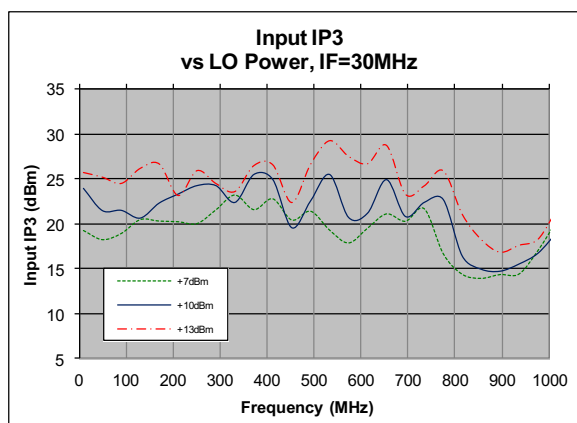
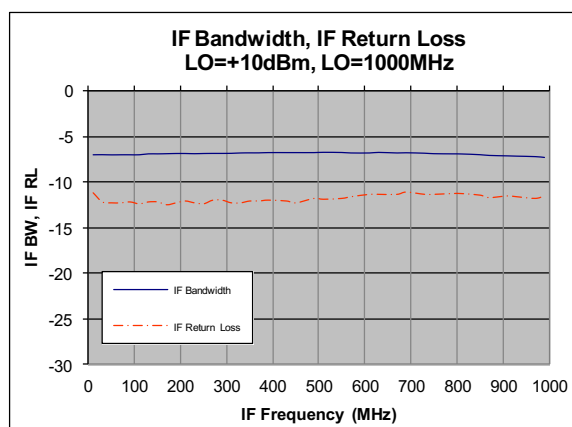
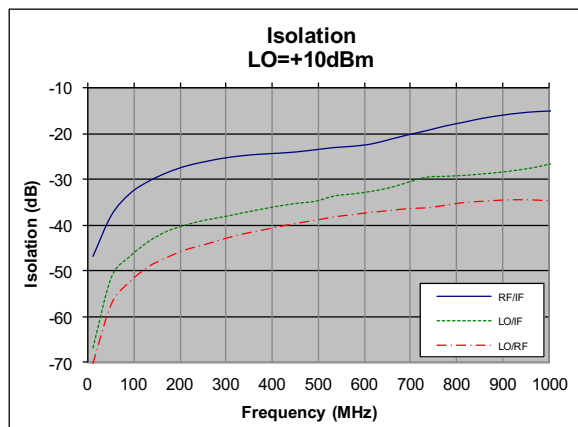
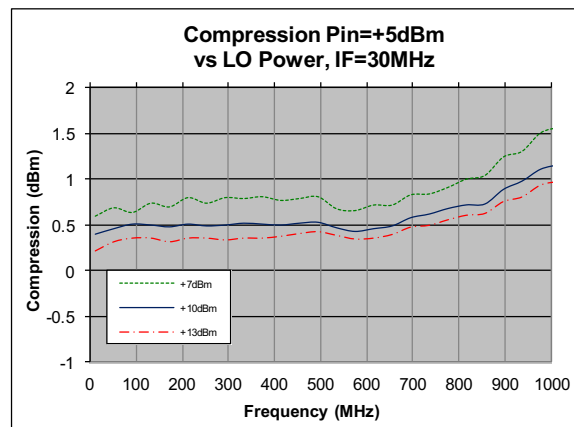
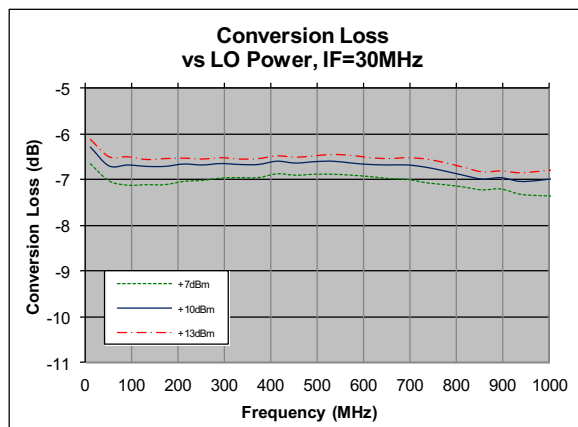
HD32499 is a passive double balanced mixer operates with LO drive level range of +7dBm to +13dBm.

Electrical Specifications @ +25 °C, LO= +10dBm, IF=30MHz, 50 Ω

| Parameter | Unit | Minimum | Typical | Maximum |
|-------------------------|------|---------|---------|---------|
| Frequency Range | | | | |
| LO/RF | MHz | 20 | | 1000 |
| IF | MHz | DC | | 1000 |
| Conversion Loss | dB | | 6.5 | 9.0 |
| LO-RF Isolation | | | | |
| 20-200MHz | dB | 40 | 60 | |
| 200-500MHz | dB | 25 | 48 | |
| 500-1000MHz | dB | 20 | 37 | |
| LO-IF Isolation | | | | |
| 20-200MHz | dB | 30 | 45 | |
| 200-500MHz | dB | 20 | 35 | |
| 500-1000MHz | dB | 11 | 27 | |
| RF Input Power up to | dBm | | +5 | |
| Input IP3 (Center Band) | dBm | | +20 | |

20-1000MHz Frequency Mixer

Typical Performance @ +25 °C

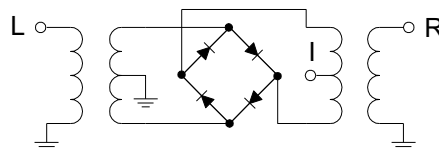


20-1000MHz Frequency Mixer

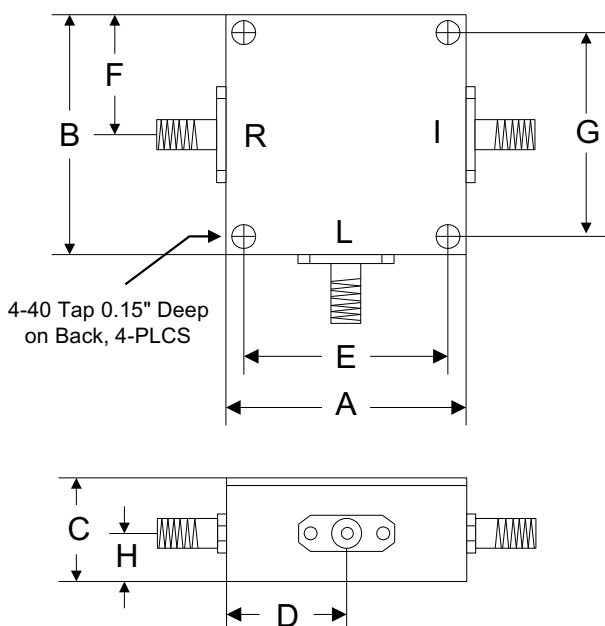
Absolute Maximum Ratings

| Parameter | Absolute Maximum |
|-----------------------|-------------------|
| RF Power | +17dBm |
| Peak IF Current | 40mA |
| Operating Temperature | -40 °C to +85 °C |
| Storage Temperature | -55 °C to +100 °C |

Schematic



Outline



| | A | B | C | D | E | F | G | H |
|-------------|-------|-------|-------|-------|-------|-------|-------|-------|
| Inch | 1.250 | 1.250 | 0.563 | 0.625 | 1.000 | 0.625 | 1.000 | 0.250 |
| mm | 31.75 | 31.75 | 14.29 | 15.88 | 25.40 | 15.88 | 25.40 | 6.35 |