

# PRODUCT SPECIFICATION FOR INFORMATION

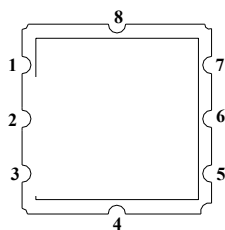
- Product Name : SAW BAND PASS FILTER
- Part No : HD34480

## 1. Specification

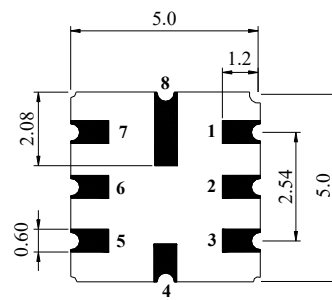
Item	Unit	Condition	Min	Typ	Max
Center Frequency	MHz	Fc	243		
Pass Band Width	MHz	242.5MHz ~ 243.5MHz	-	1.0	-
Bandwidth	MHZ	@-2dB		5.0	6.0
		@-45dB		15.0	
Insertion Loss	dB	Pass Band	-	1.5	2.5
Ripple Deviation	dB	Pass Band		0.5	1.5
VSWR	dB	Passband	-	1.5	2.0
Stop Band Rejection (Absolute Attenuation)	dB	@200MHz	45	55	-
		@300MHz	45	55	-
Terminating Impedance	$\Omega$	50			
Operating Temperature	$^{\circ}\text{C}$	-40 ~ +85			
Storage Temperature	$^{\circ}\text{C}$	-40 ~ +85			
Maximum DC Voltage	V	5			
Maximum Input Power	dBm	+10			

## ■ Package Dimension

2 : Input or Output  
6 : Output or Input  
Other Pins : Ground

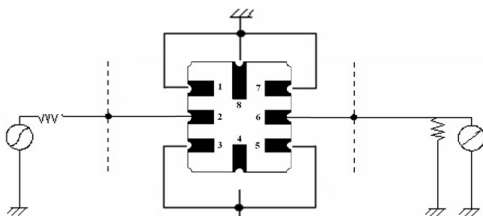


Top View



Bottom View

## ■ Matching Configuration



TOP VIEW

**No Matching Required**  
 Source / Load Impedance = 50 $\Omega$   
 Ambient Temperature = 25 $^{\circ}\text{C}$

