

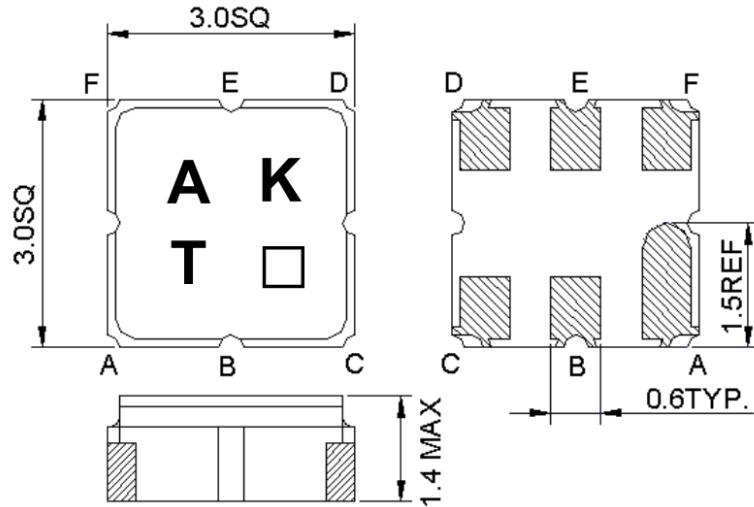
PRODUCT SPECIFICATION FOR INFORMATION

FINAL SPECIFICATION

Product Name: SAW Filter

Part No: HD34487

■ Mechanical Drawing



Pin B : Input
Pin E : Output
Pin A,C,D,F : Ground

□ : week code (Follow the table from planner each year)
Unit : mm

Note
1. Connector: SMD
2. Finish: Silver plated

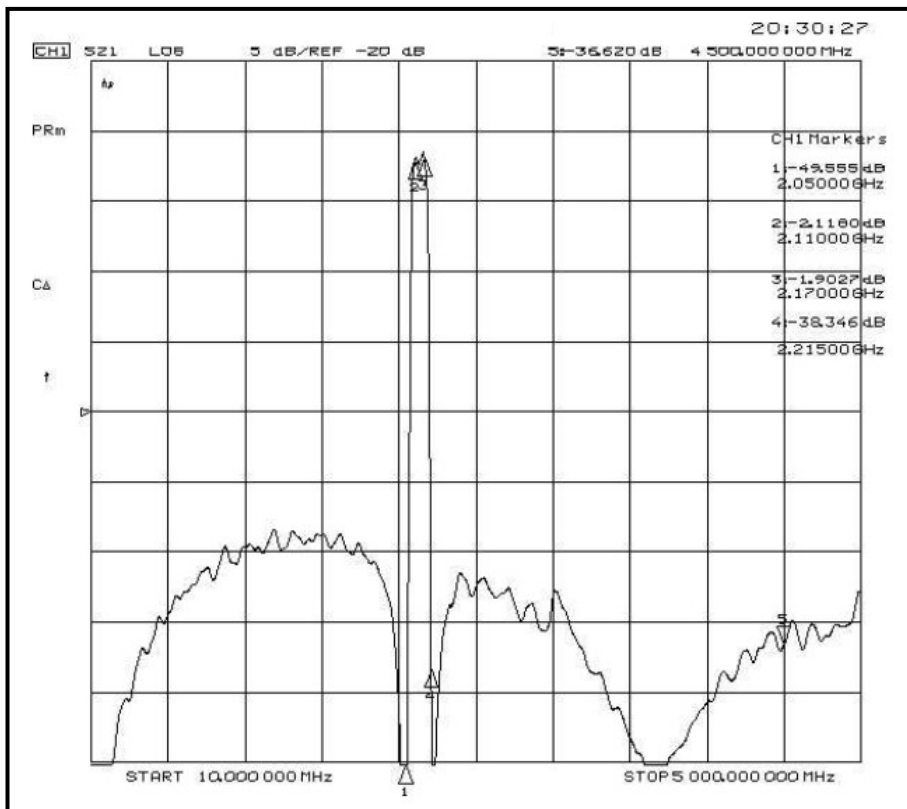
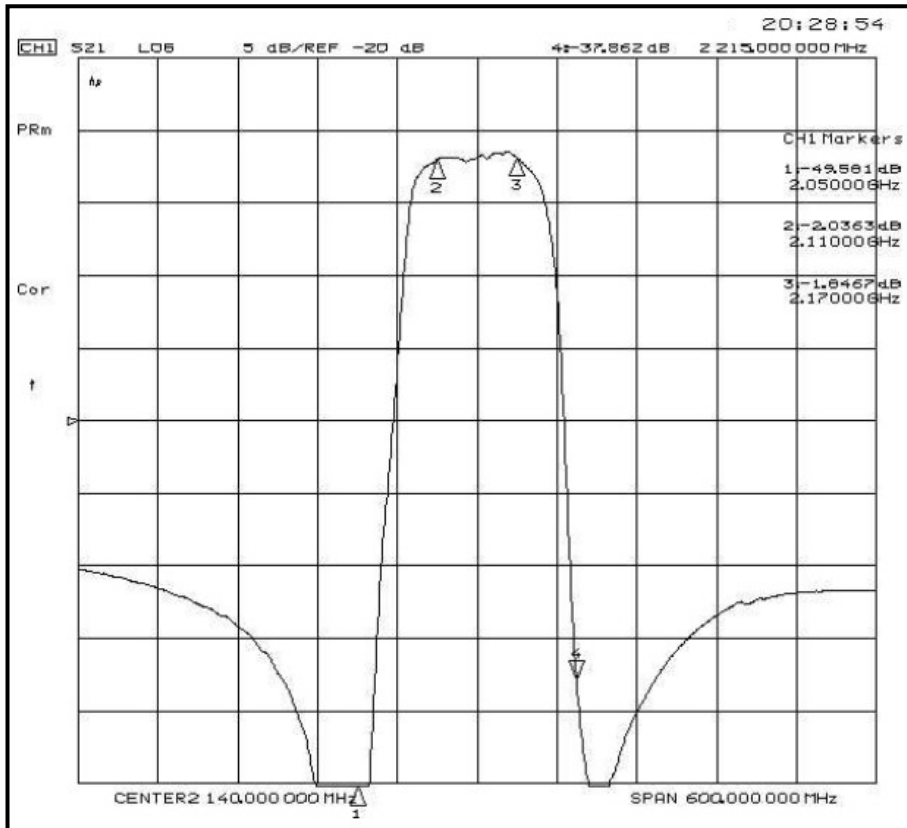
■ Electrical Specification

Parameter	Specification	Remark
1. Center Frequency	2140MHz	
2. Bandwidth [BW]	$F_c \pm 30\text{MHz}$ [2110~2170MHz]	
3. Insertion Loss in BW	3.5dB Max.	
4. Amplitude Ripple in BW	2.0dB Max.	
5. VSWR in BW	2.2:1 Max.	
6. In/Out Impedance	50Ω	
7. Attenuation [Absolute Value]	21dB Min.@ DC~500MHz	
	20dB Min.@ 500~1900MHz	
	25dB Min.@ 1900~2050MHz	
	20dB Min.@ 2215~2300MHz	
	25dB Min.@ 2300~4500MHz	
8. Input Power Level	13dBm	
9. DC Voltage	0V	
10. Operating Temperature	-30°C to +80°C	
11. Storage Temperature	-40°C to +85°C	

Remarks: This is a preliminary datasheet for reference.

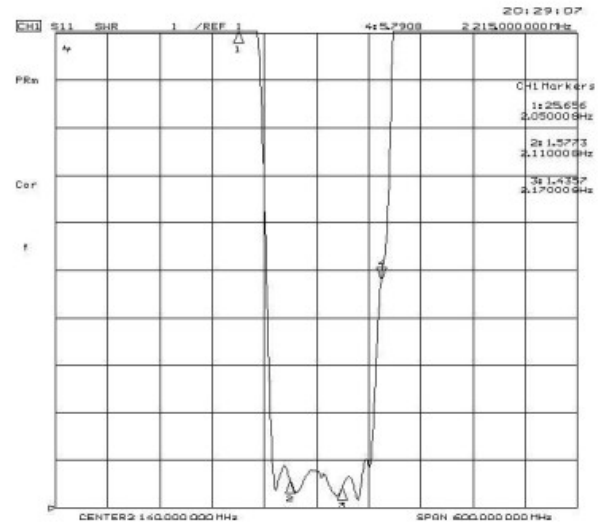
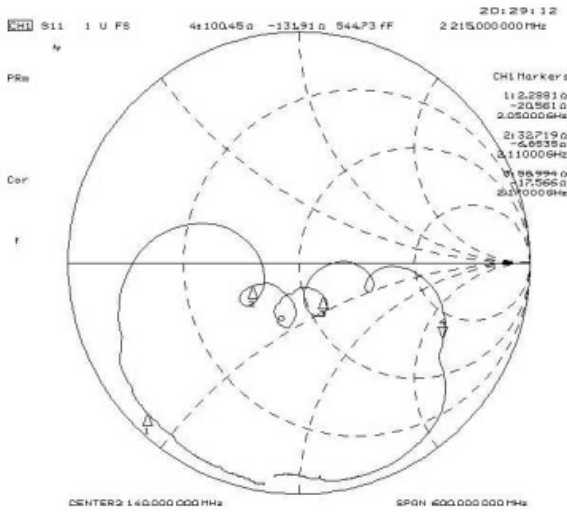
■ Simulation Data

1) Transfer Functions

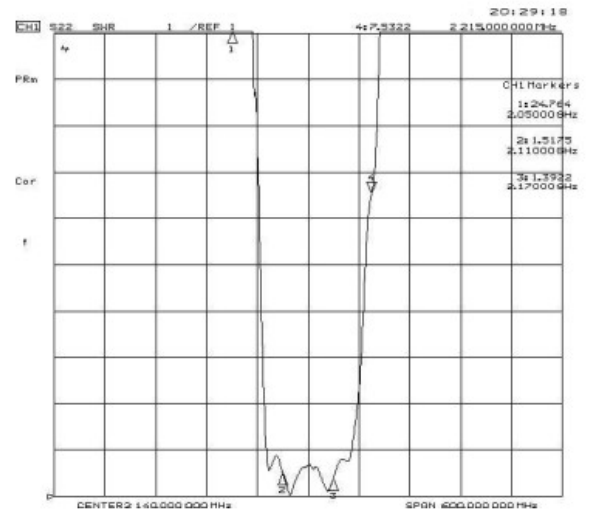
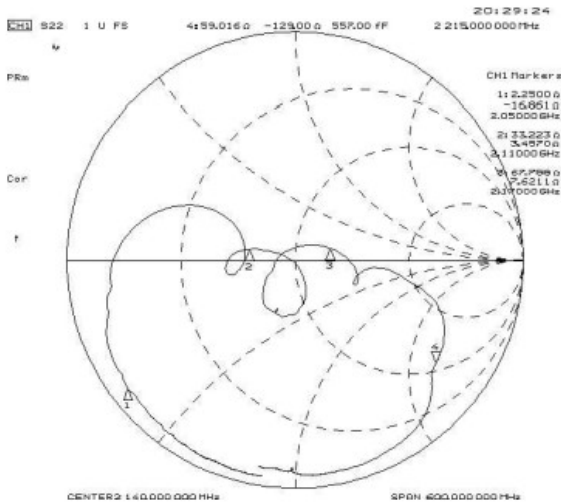


2) Reflections Functions

S11 VSWR

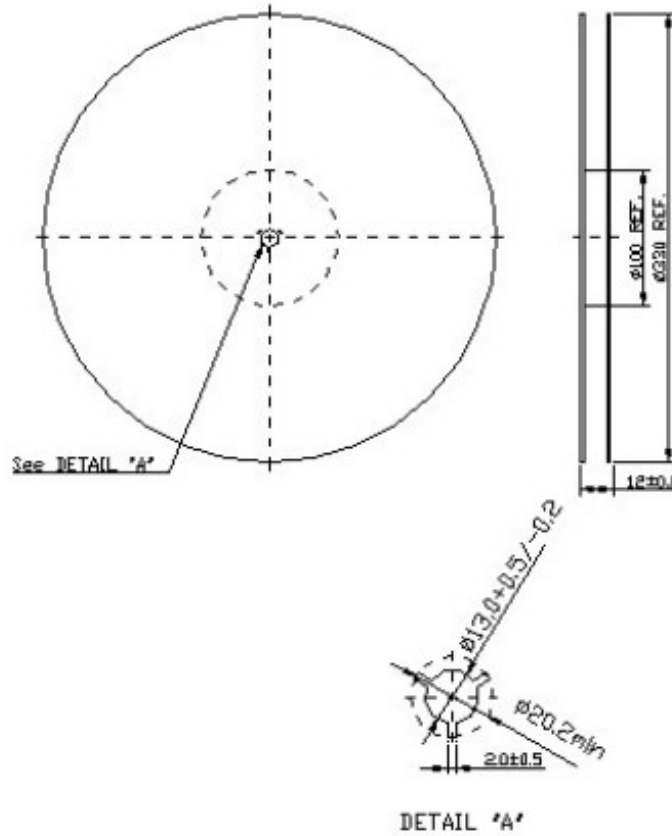


S22 VSWR

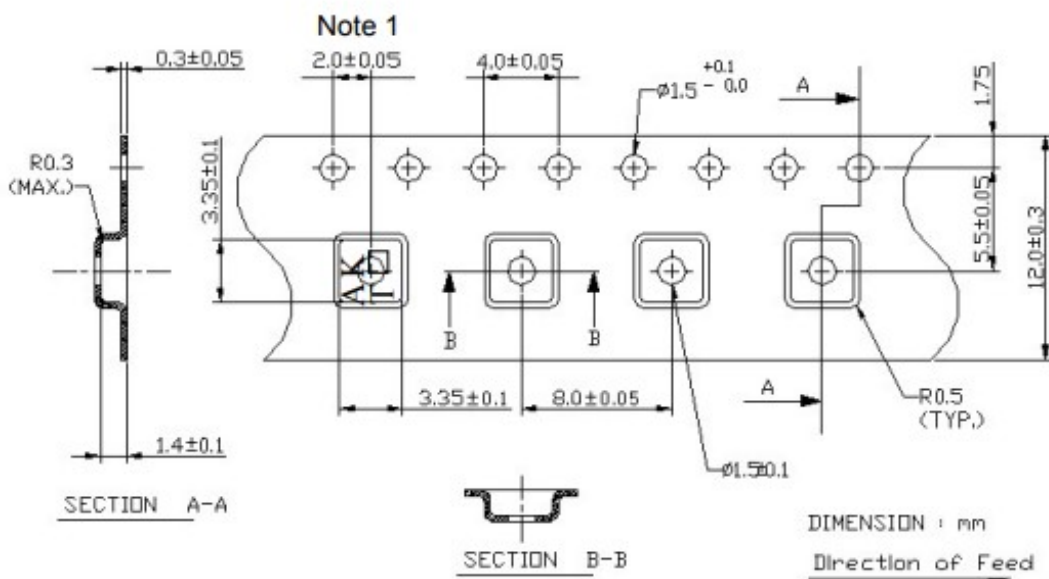


■ Packing

1. REEL DIMENSION



2. TAPE DIMENSION



Note:

1. Pocket position relative to sprocket hole measured as true position of pocket, not pocket hole.

■ **Recommended PCB Board Pattern**

